

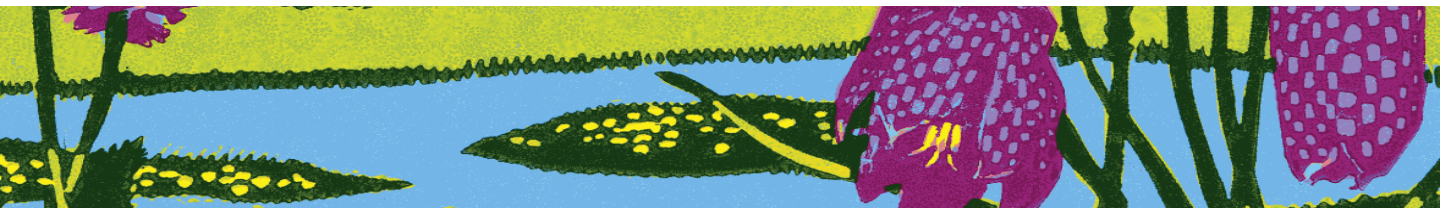
Case Study 3.4 North Meadow, Wiltshire: marker stones – the designation of floodplain-meadow features

Natural England owns North Meadow SSSI, which also forms part of the Clattinger Farm and North Meadow Special Area for Conservation, designated for its lowland meadow plant community. North Meadow has an ancient Lammas meadow management regime. The grazing rights are held in common for the inhabitants of Cricklade from 12 August to 12 February each year. Documentary evidence from 1588 indicates that the management pattern then referred to was already well established and may date back to the early medieval period (Whitehead 1982). Features of historic interest are still present, including boundary stones indicating the allocation of hay strips to members of the parish around Cricklade.



A boundary stone indicating the ownership of John Boot (JB), North Meadow. It is one of the stones designated as a ‘building of special architectural or historic interest’. © Emma Rothero

The reserve managers wished to explore the value of these marker stones and establish whether they could be listed to provide them with a degree of statutory protection. A visit was made by the local County Archaeologist and it was agreed that the stones should be considered for listing as ‘Buildings of Special, Architectural or Historic Interest’ to reflect their special interest and national importance. The Secretary of State confirmed the designation in 1986 (see Figure 1). Historic features can also be listed on the local Historic Environment Record. This should result in them being considered in management/planning policies, but does not provide statutory protection.



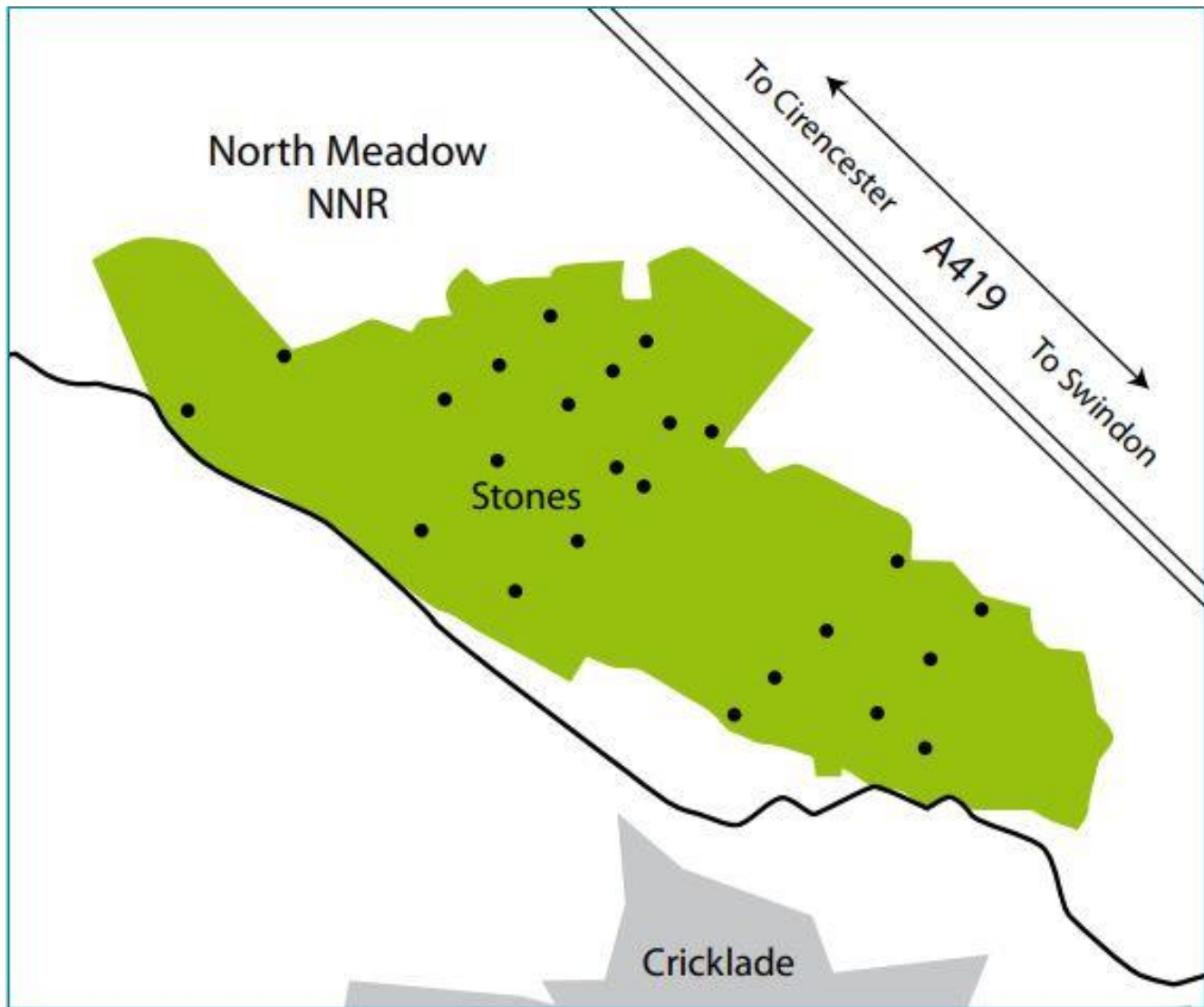


Figure 1. The map indicating the location of those stones included as part of the designation as a 'building of special architectural or historic interest' at North Meadow. The stones that are listed are those that were shown on the OS map.

