

Beauty & Utility in Floodplain Meadows: what price both?

John Rodwell
Ecologist

Floodplain Meadows Forum Conference
Cotswold Water Park 14-15 May 2014



Beauty & Utility

Ecosystem services include:

Provisioning services (crops, water)

Regulating services (pollination,
climate regulation)

Supporting services (photosynthesis,
soil development)

Cultural services

Beauty & Utility

Cultural services include:

Cultural identity

Heritage values

Recreation & tourism

Inspiration

Aesthetic appreciation

Spiritual services

Beauty & Utility



'Inspiration is the use of natural motifs or artefacts in arts, folklore, and so on ...'

Beauty & Utility



'Inspiration is the use of natural motifs or artefacts in arts, folklore, and so on ...'

'Aesthetic appreciation of natural and cultivated landscapes'

Beauty & Utility

'Inspiration is the use of natural motifs or artefacts in arts, folklore, and so on ...'

'Aesthetic appreciation of natural and cultivated landscapes'

'Sacred, religious or other forms of spiritual inspiration'

Beauty & Utility



Are these kinds of definition adequate?

Beauty & Utility



Are these kinds of definition adequate?

What are the outcomes & indicators of aesthetic & spiritual experiences in floodplain meadows?

Beauty & Utility



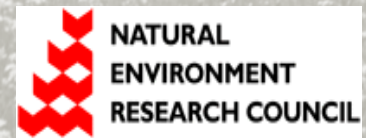
Are these kinds of definition adequate?

What are the outcomes & indicators of aesthetic & spiritual experiences in floodplain meadows?

How do they fit with their other ecosystem services?

Beauty & Utility

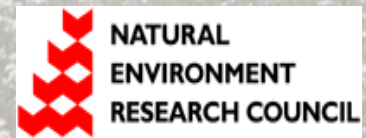
A two-day workshop at York
in January 2013



Beauty & Utility

A two-day workshop at York
in January 2013

for arts practitioners, people of religious
faiths, scientists, policy persons



Beauty & Utility

A two-day workshop at York
in January 2013

for arts practitioners, people of religious
faiths, scientists, policy persons

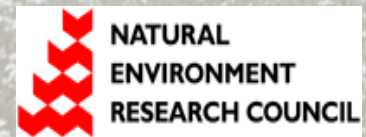
Report as pdf on the BESS web-site



Beauty & Utility

... and a continuing
conversation

within the frame of the NIAs
with statutory agencies and NGOs,
here and elsewhere in Europe
and in the 'Belonging & *Heimat*' Project
at Manchester University



Beauty & Utility



Sensory & spiritual experiences of the environment have distinctive features and deserve separate recognition among other cultural services

Beauty & Utility



Sensory & spiritual experiences of the environment have distinctive features

but they present challenges to attitudes and practice concerning outcomes & indicators of ecosystem services in general

Beauty & Utility

Sensory & spiritual experiences of the environment have distinctive features

but they present challenges to attitudes and practice

and to how we can enable beauty & utility to co-exist on flood-plains

Beauty & Utility

A grayscale photograph of a vast field of small white flowers, possibly a flood-plain, under a cloudy sky. The flowers are densely packed and stretch towards the horizon. The sky is filled with soft, diffused light, suggesting an overcast day. The overall mood is serene and contemplative.

Do you let artists tell you of 'willing attendance' on your flood-plain ...

Beauty & Utility

A grayscale photograph of a vast field of small white flowers, possibly a flood-plain, under a cloudy sky. The flowers are in the foreground and middle ground, creating a textured, repetitive pattern. The background shows a flat horizon line with some distant trees and a cloudy sky.

Do you let artists tell you of 'willing attendance' on your flood-plain ...

where unbidden engagement occurs,
in dialogue, things brought together ...

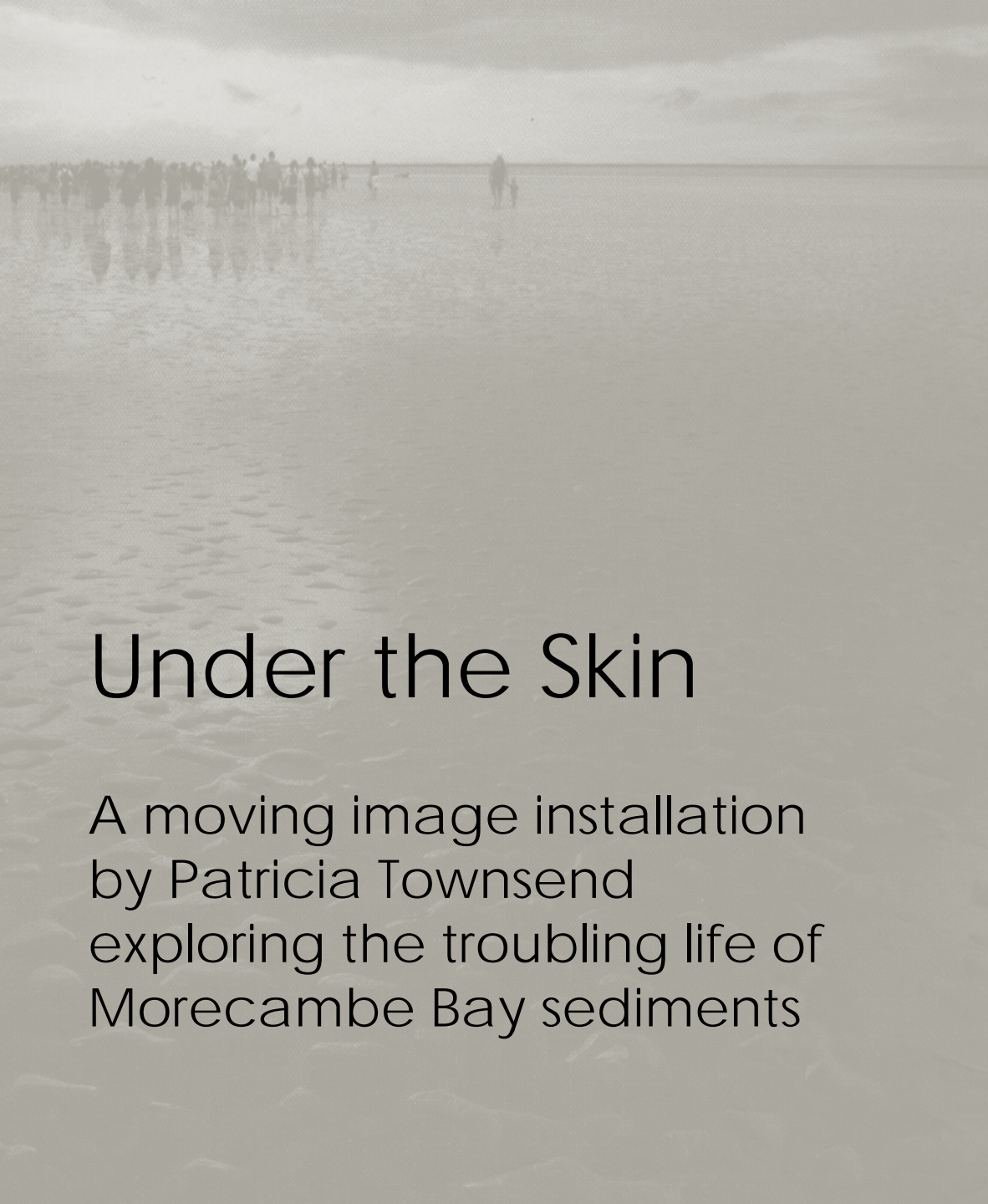
Beauty & Utility

Do you let artists tell you of 'willing attendance' on your flood-plain ...

where unbidden engagement occurs, in dialogue, things brought together ...

with outcomes that are uncertain?





Under the Skin

A moving image installation
by Patricia Townsend
exploring the troubling life of
Morecambe Bay sediments

Beauty & Utility



Do you share artistic inspiration in your meadows through exhibition and performance ...

Beauty & Utility



Do you share artistic inspiration in your meadows through exhibition and performance ...

and open up the prospect of similar relationships for others ...

Beauty & Utility

Do you share artistic inspiration in your meadows through exhibition and performance ...

and open up the prospect of similar relationships for others ...

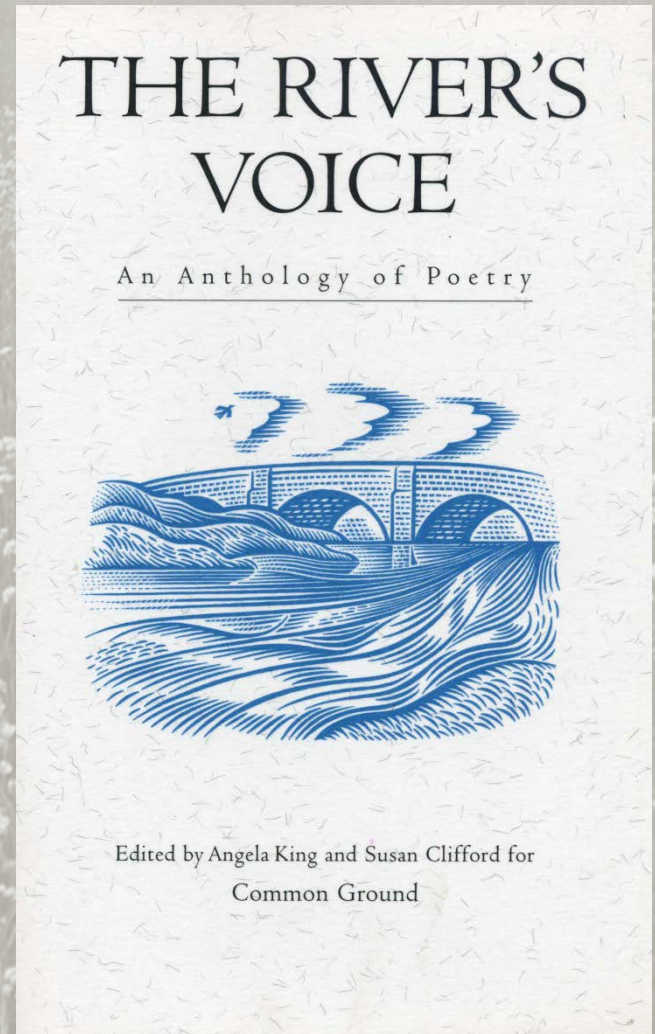
or are you using just footfall and structured questionnaires to measure impacts?

Beauty & Utility

Letting the river tell
the story

carrying words and
music downstream

negotiating a shared
rhythm with the water



Beauty & Utility



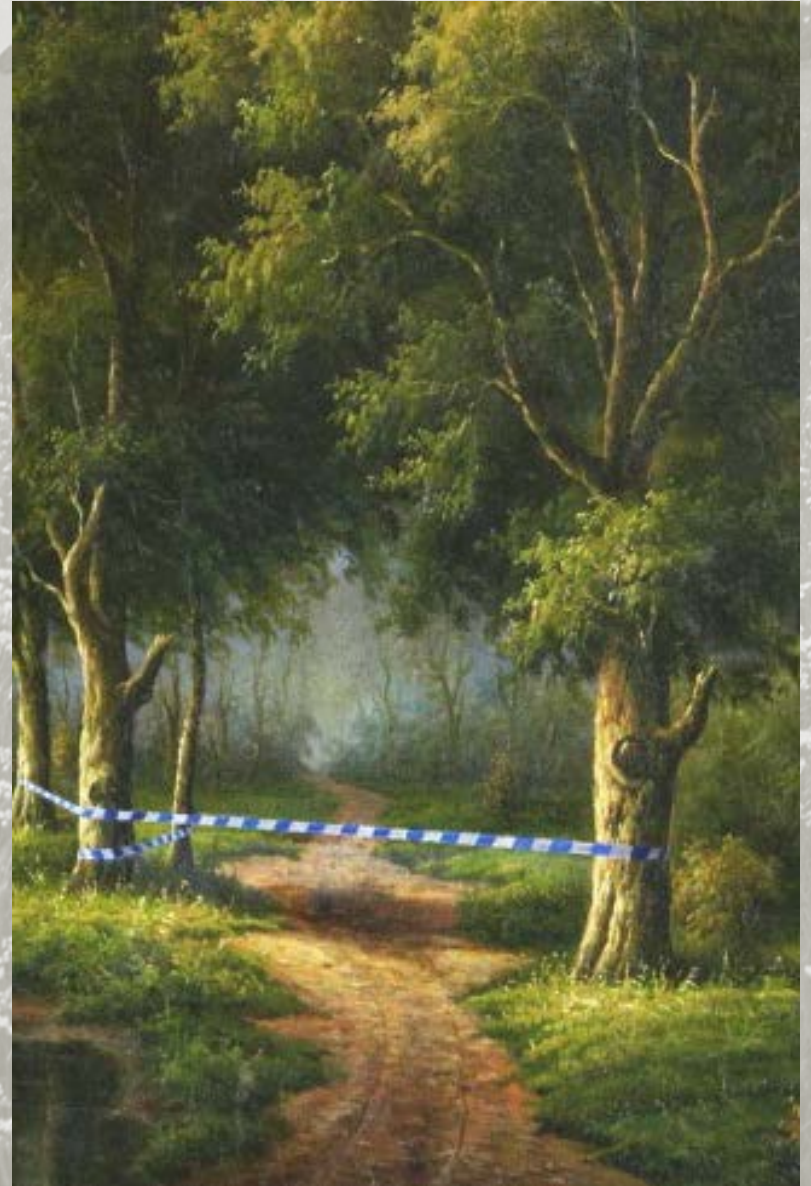
Do you accommodate opportunity, unpredictability and risk for visitors to your flood-plain?

Beauty & Utility

Do you accommodate opportunity, unpredictability and risk for visitors to your flood-plain?

Or do you hinder sensory and spiritual experiences by emphasising the special and by over-interpreting?







**WE ARE APPEALING FOR WITNESSES
CAN YOU HELP US?**

INCIDENT

WERE YOU IN THE AREA BETWEEN 2am - 3am
ON FRIDAY 24th SEPTEMBER 04. IF SO
CONTACT THE POLICE STATION ON THE
NUMBERS SHOWN BELOW

In strictest confidence please phone
020 8649 2477/8

**DID YOU SEE OR HEAR ANYTHING?
PLEASE CALL US**

On the number above or at your local police station
or ring **CRIMESTOPPERS**



Beauty & Utility



THE MERSEY
FOREST
more from trees

enter a postcode or place

Show on map

"Where" policies

Click green areas on the map to read proposals and to comment.

Key

Indicative target for woodland cover:

10%	20%	30%	40%
-----	-----	-----	-----

No change in net woodland cover recommended

Show on map

Specific locations

These show ideas that people have suggested - click below to add your own.

- Suggest where trees are needed
- Suggest how to make sites even better
- Add your favourite trees and woods

Marbury Country Park [\(Visit website\)](#)

Added by Leonie Brown:
We had a wonderful day at Marbury Park with Class 5 from Green Lane School. The children enjoyed the walk we took along Budworth Mere, playing football in the park, seeing the ducks and

13 votes [5 comments](#)

J Marshall says:
There was a time when the town centre was the centre of the community. Northwich, Winsford, Middlewich town centres all look like they are closing down. Northwich Woodlands is now the place where we meet, it is our community centre

Beauty & Utility



How are you exploring relationships between environmental condition & human well-being in your meadows?

Beauty & Utility



How are you exploring relationships between environmental condition & human well-being in your meadows?

Do you offer any new perspectives on naturalness and the wild?

Beauty & Utility

How are you exploring relationships between environmental condition & human well-being in your meadows?

Do you offer any new perspectives on naturalness and the wild?

Or on how to negotiate change?

Beauty & Utility

The shift from Burnet flood-plain meadow (NVC MG4) to false oat-grass meadow (MG1) with neglect of mowing and relief from flooding

<i>Dactylis glomerata</i>	III	V	V	IV
<i>Plantago lanceolata</i>	V	IV	IV	III
<i>Holcus lanatus</i>	IV	V	IV	III
<i>Lathyrus pratensis</i>	IV	IV	III	II
<i>Festuca rubra</i>	V	V	IV	II
<i>Anthoxanthum odoratum</i>	III	IV	III	I
<i>Rumex acetosa</i>	V	IV	II	II
<i>Taraxacum officinale</i> agg.	V	IV	II	II
<i>Trifolium pratense</i>	V	IV	II	II
<i>Trifolium repens</i>	IV	IV	II	II
<i>Ranunculus acris</i>	V	V	II	II
<i>Trisetum flavescens</i>	III	V	III	I
<i>Lolium perenne</i>	IV	V	I	II
<i>Cynosurus cristatus</i>	V	V	I	I
<i>Filipendula ulmaria</i>	V	III	I	I
<i>Alopecurus pratensis</i>	IV	II	I	I
<i>Sanguisorba officinalis</i>	V	IV		
<i>Primula veris</i>	II			
<i>Arrhenatherum elatius</i>	II	III	V	V
<i>Heracleum sphondylium</i>	I	II	V	III
<i>Cirsium arvense</i>			I	III
<i>Anthriscus sylvestris</i>				II
<i>Rumex crispus</i>				I
<i>Rumex obtusifolius</i>				I

Beauty & Utility

The even mead, that erst brought sweetly forth
The freckled cowslip, burnet and green clover,
Wanting the scythe, all uncorrected, rank,
Conceives by idleness, and nothing teems,
But hateful docks, rough thistles, kecksies, burs,
Losing both beauty and utility ...

Henry the Fifth, Act V, Scene i
William Shakespeare

Beauty & Utility

The even mead, that erst brought sweetly forth
The freckled *Primula veris*, *Sanguisorba
officinalis* and *Trifolium spp.*

Wanting the scythe, all uncorrected, rank,
Conceives by idleness, and nothing teems,
But hateful docks, rough thistles, kecksies, burs
Losing both beauty and utility ...

Henry the Fifth, Act V, Scene i
William Shakespeare

Beauty & Utility

The even mead, that erst brought sweetly forth
The freckled *Primula veris*, *Sanguisorba
officinalis* and *Trifolium spp.*

Wanting the scythe, all uncorrected, rank,
Conceives by idleness, and nothing teems,
But hateful *Rumex spp.*, *Cirsium spp.*, big
umbelliferae, *Arctium minus*,
Losing both beauty and utility ...

Henry the Fifth, Act V, Scene i
William Shakespeare

Beauty & Utility



Are you helping people understand relationships between nature & culture in your meadows?

Beauty & Utility

Are you helping people understand relationships between nature & culture in your meadows?

Are you making 'places for nature', or just 'space for nature'?

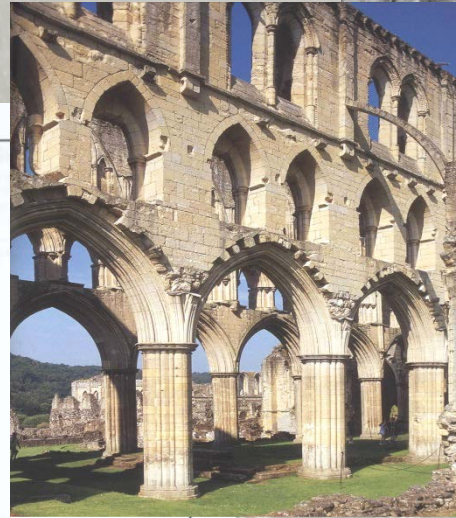
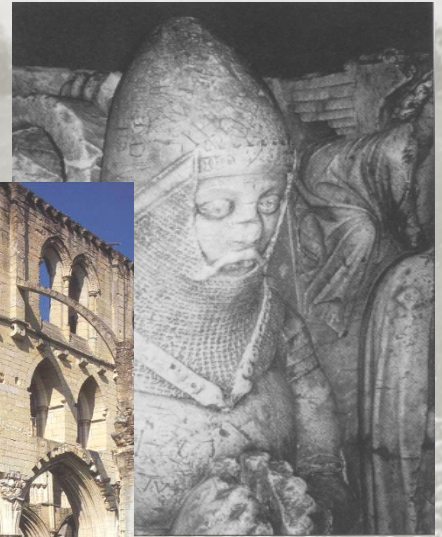
Beauty & Utility

Are you helping people understand relationships between nature & culture in your meadows?

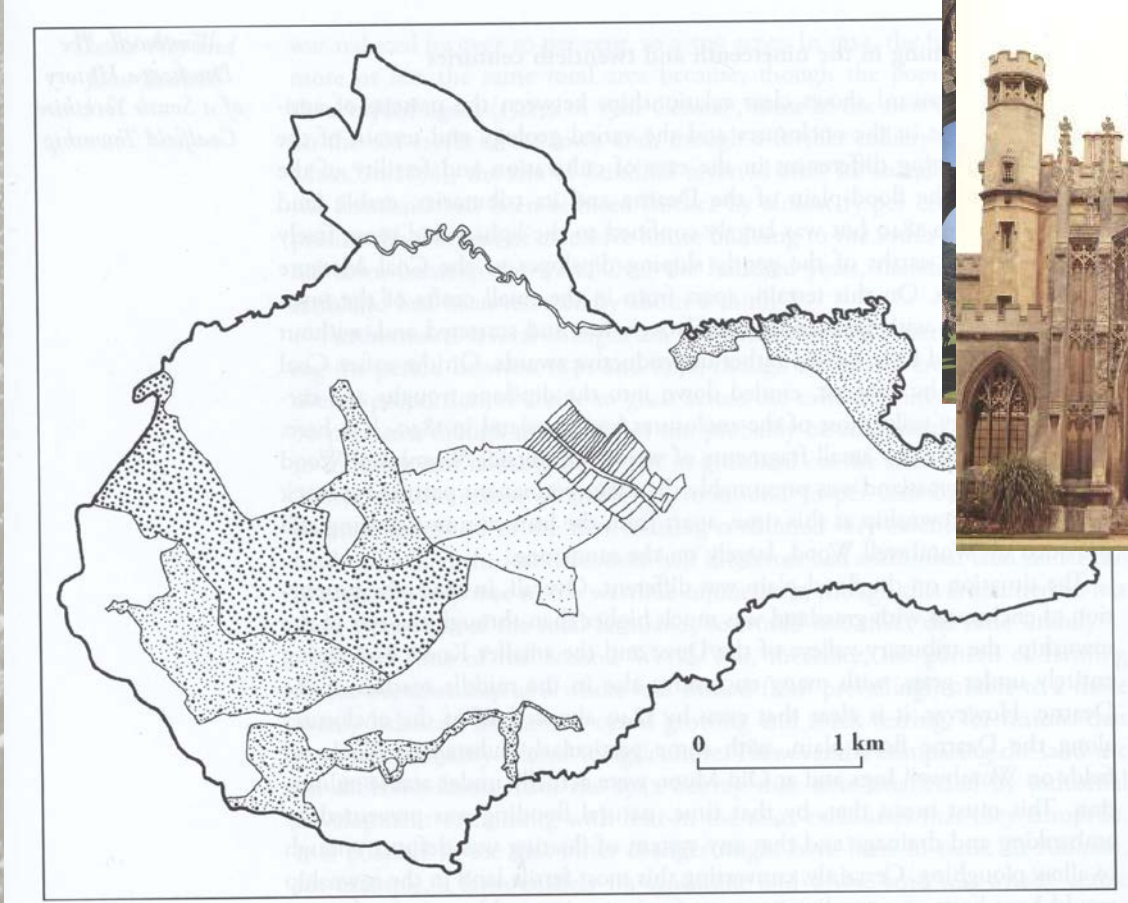
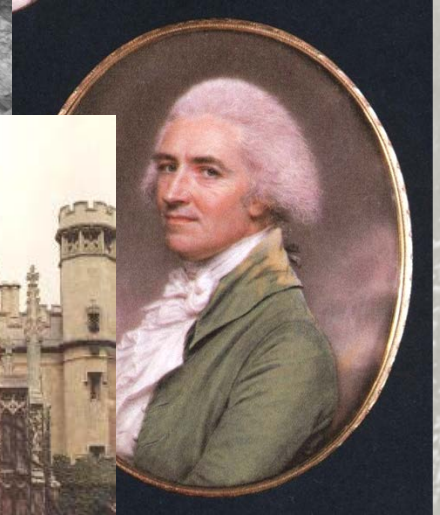
Are you making 'places for nature', or just 'space for nature'?

Are you exploring what it means to belong?

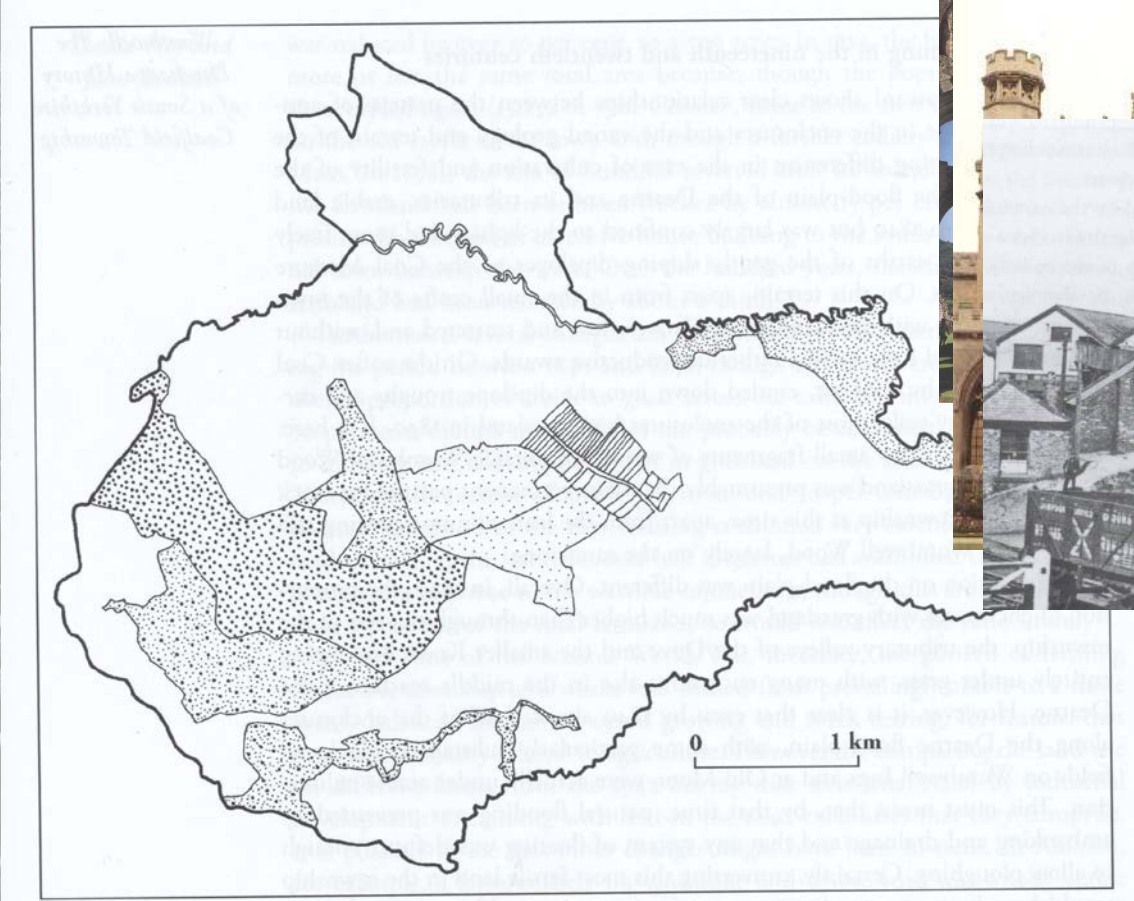
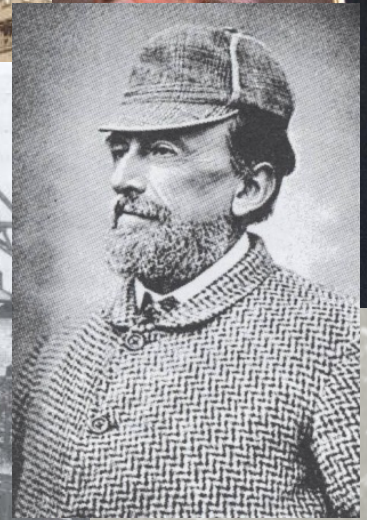
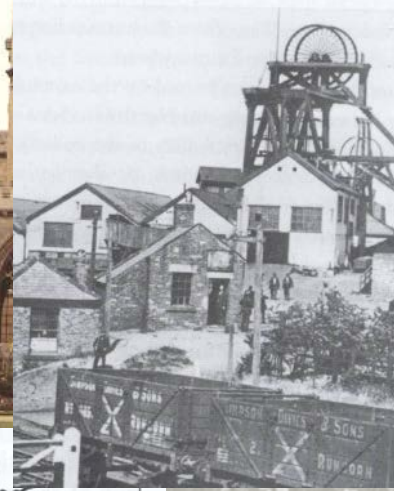
Beauty & Utility



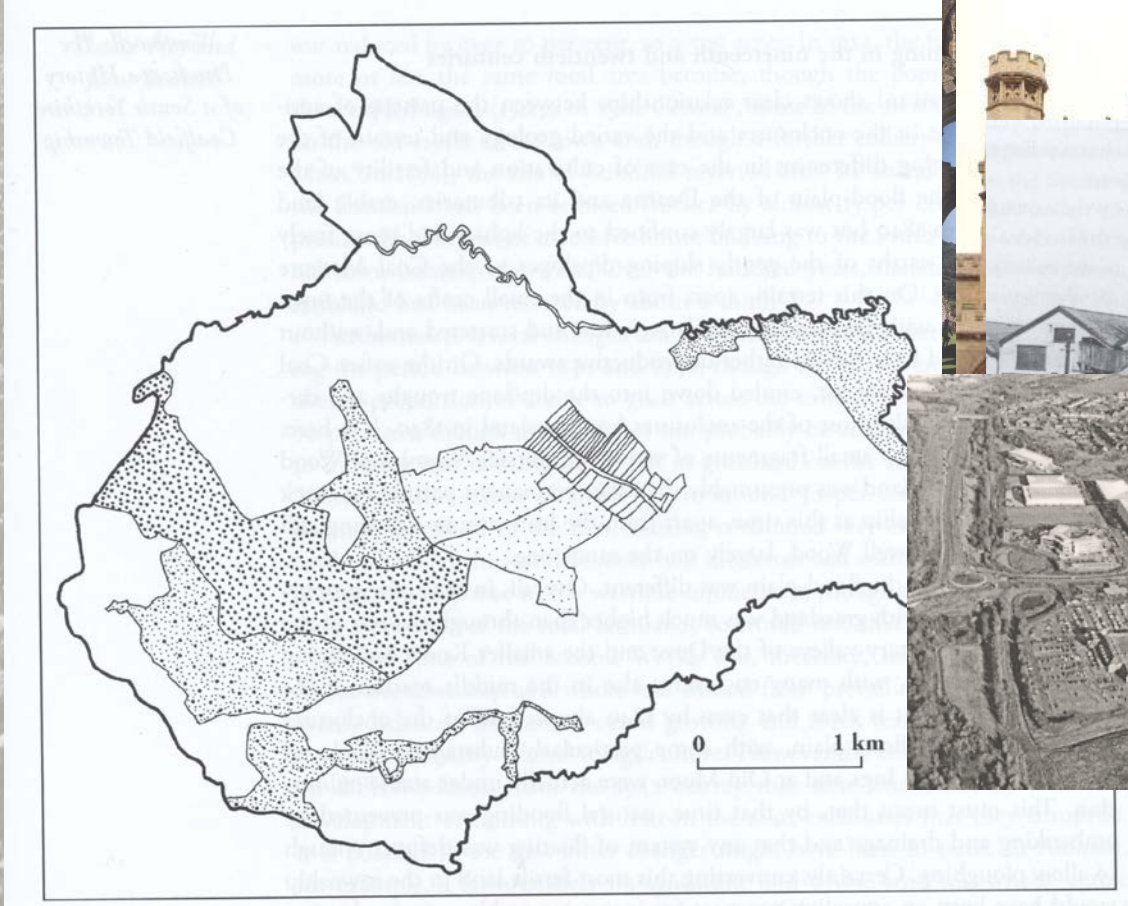
Beauty & Utility



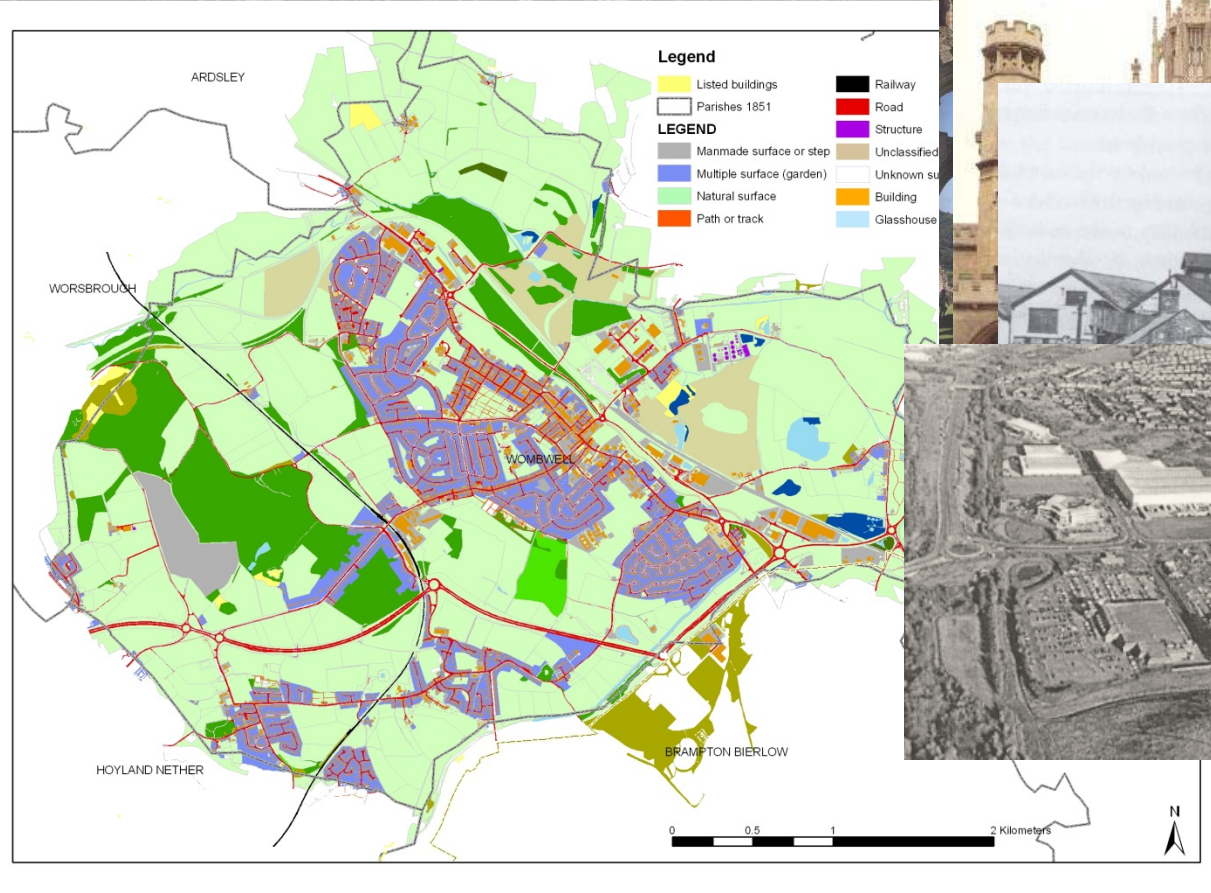
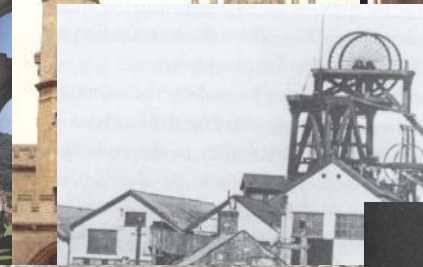
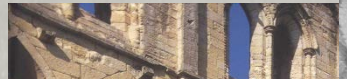
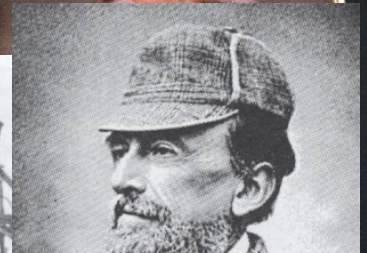
Beauty & Utility



Beauty & Utility



Beauty & Utility



Beauty & Utility



Beauty & Utility



